

DWG.NO. HW1385416

A

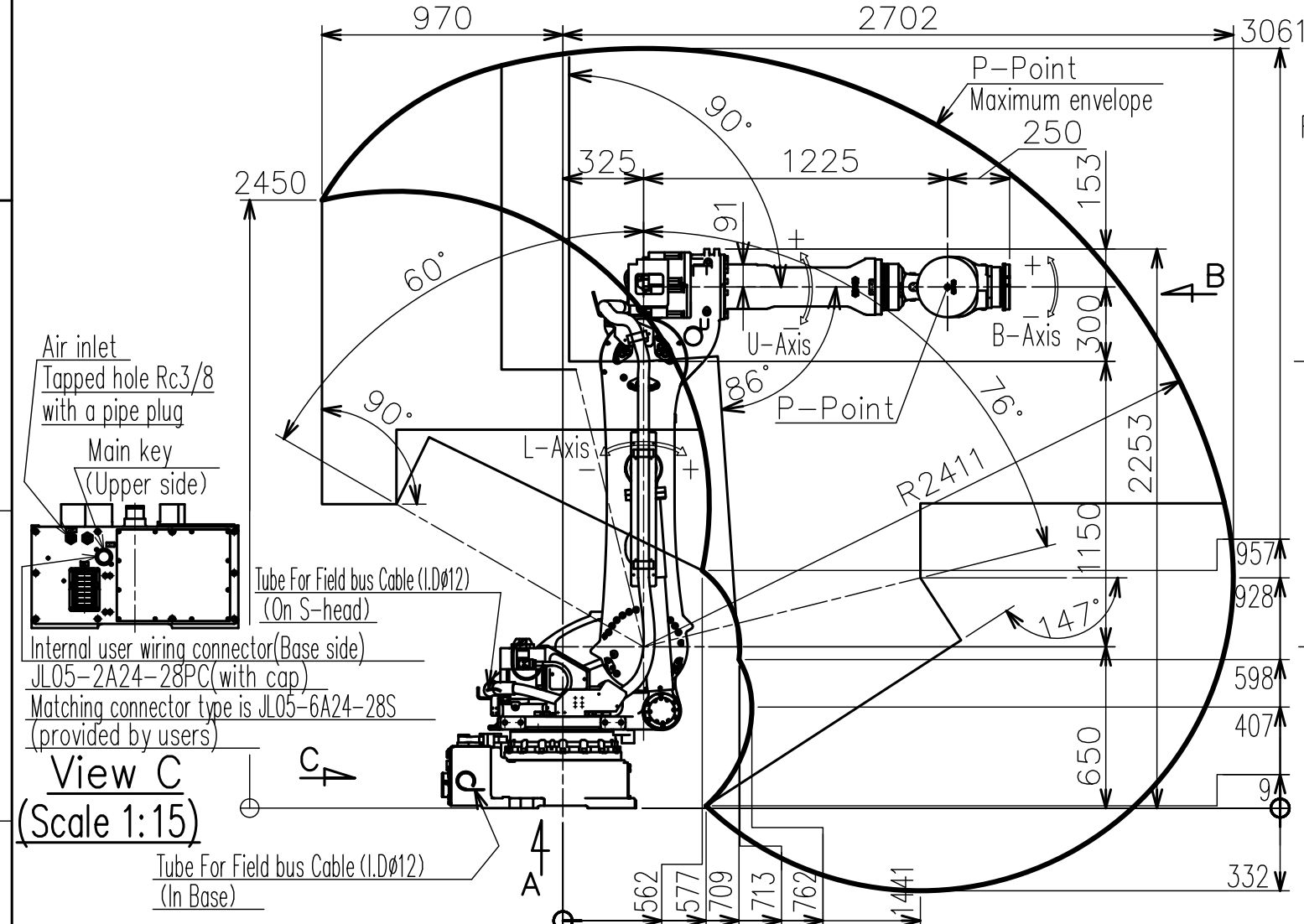
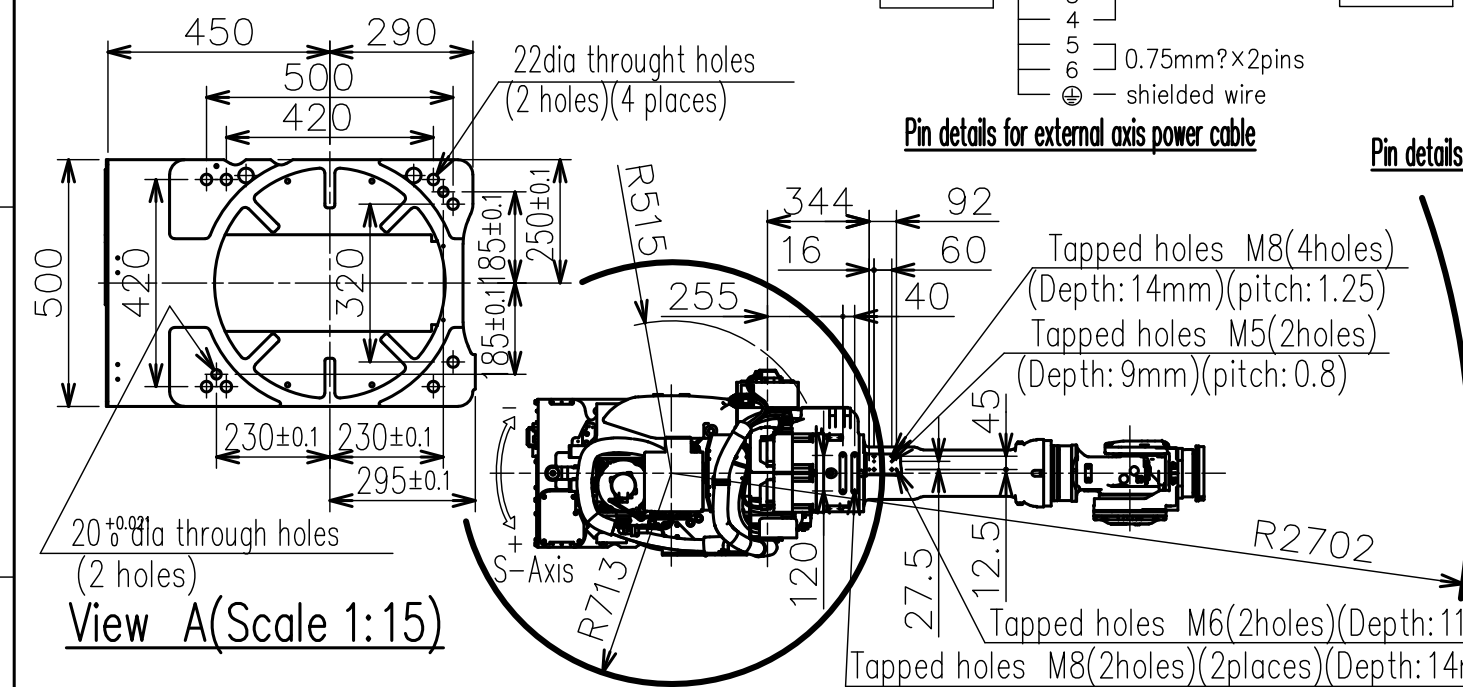
B

C

D

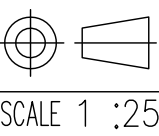
E

F



Note:  
1. All rights reserved.  
2. Please note that the data is subject to be deleted without advance notice.  
3. No warranty is given in relation to the data including the specification.  
4. We are not responsible for any damages or loss caused by the use of the data.

FOR STUDY PURPOSE ONLY



**YASKAWA**  
株式会社 安川電機

Reference Drawing

TITLE MOTOMAN-GP225  
DIMENSION DIAGRAM

DRWN DATE Oct.03.'17  
DWG.NO. HW1385416

Item	Model	MOTOMAN-GP225
Configuration		Vertically articulated
Degree of Freedom		6
Payload	Wrist	225kg
	On U-arm	30kg
Repeatability (※1)		±0.2 mm
Range of Motion	S-Axis(Turning)	-180° - +180°
	L-Axis(Lower Arm)	-60° - +76°
	U-Axis(Upper Arm)	-86° - +90°
	R-Axis(Roll)	-360° - +360°
	B-Axis(Pitch/Yaw)	-125° - +125°
	T-Axis(Twist)	-360° - +360°
Max Speed	S-Axis	2.09 rad/s, 120°/s
	L-Axis	1.69 rad/s, 97°/s
	U-Axis	2.01 rad/s, 115°/s
	R-Axis	2.53 rad/s, 145°/s
	B-Axis	2.53 rad/s, 145°/s
	T-Axis	3.84 rad/s, 220°/s
Allowable Moment	R-Axis	1372 N·m (140kgf·m)
	B-Axis	1372 N·m (140kgf·m)
	T-Axis	735 N·m (75kgf·m)
Allowable Inertia (GD 7/4)	R-Axis	145kg·m <sup>2</sup>
	B-Axis	145kg·m <sup>2</sup>
	T-Axis	84kg·m <sup>2</sup>
Approx. Robot mass		1080kg
Protected structure		Body: IP54 Wrist: IP67
Mounting method		Floor-mounted
Ambient Conditions	Temperature	0 to +45 °C
	Humidity	20 to 80%RH (Non-condensing)
	Vibration	4.9m/s <sup>2</sup> (0.5G) or less
	Altitude	1000m or less
Power Requirements	Others	• Free from explosive or corrosive gas and liquid. • Free from dust, soot, oil, or water. • Free from electrical noise. • Free from strong magnetic fields.
Controller		5.0kVA YRC1000

※1 Repeatability is conformed to ISO 9283.  
※2 The manipulator is in the home position.

Units: mm

SIZE A3